



# INTERGR8ED SOLUTIONS

FINANCE, COMPLIANCE &  
GOVERNANCE SIMPLIFIED

*Reg No.: 2020/210218/07  
B-BBEE Level 1 contributor*





# Contents

*(topics are linked to pages)*

The Challenge	03
Our Solution	04
Founder	05
Services	06
Financial Management	07
Compliance & Governance	08
Human Resources Partner	09
Legal Support	10
Suggested Essential Services	12
Contact Us	16



CLICK THIS ICON ON THE TOP RIGHT OF EACH PAGE TO NAVIGATE BACK TO CONTENTS



## The Challenge

Our understanding is that Entrepreneurs of Start-up, Small & Medium Enterprises (SMEs) and Non-Profit Entities (NPOs) play a critical role in driving South Africa's economy.

Implementation costs for compliance and suitable governance structures tend to hinder the success of businesses and the growth of the South African economy as a whole.

Added to this burden, the dynamic and constant changes to rules and regulations leave the business owners on the 'back foot' with regard to the management and execution of compliance and governance measures in their business.

As businesses grow, the operational dependence on effective and proactive financial management, compliance and governance becomes essential to unlocking market opportunities. This is especially true for SMEs & NPOs in highly competitive industries where stringent financial management and planning could be the key to unlocking competitive advantage and getting ahead of the rest.





## Our Solution

Intergr8ed Solutions provides Financial Management, Compliance, Governance, Human Resources and Legal support.

Our mission is to ensure the simplest, yet most effective holistic solution without complicating business administration – easing your business growing pains while enhancing sustainability.





## Founder



### Sharon Pillai (nee Lazarus)

- CFA - ICBA SA  
*Institute of Certified Bookkeepers  
and Accountants*  
*Ref: 4830898*
- CIMA  
*Chartered Institute of Management  
Accountants*  
*Ref: 1-39LFQSN*

Sharon Pillai is a seasoned professional with experience within financial management areas across several industries: banking, education, gaming & hotels, food manufacturing industry, social enterprise (non-profit company, investments & trust).

She has considerable experience in developing and implementing financial management, compliance, and governance strategies.

Sharon is an experienced leader and specialist in the fields of Financial Management and Business Improvement – and is passionate about facilitating business growth through effective and pro-active strategies.



# Services

- Budgeting
- Bookkeeping
- Accounting & Financial Reporting
- Audit Oversight
- Management Support
- Customised Financial Process



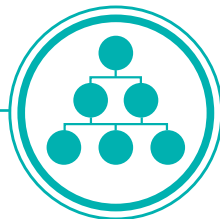
Financial Management



Compliance & Governance

- Policies & Procedures
- Board Reports
- Board Compliance
- SARS Compliance
- Company Secretarial Services – CIPC

- HR Business Support
- Labour Relations
- Performance Management & Employee Relations
- Recruitment
- HR Administration
- Payroll Services
- Organisation Statutory Compliance & Reporting



Human Resources Partner



Legal Support

- Contract Law
- General Business Legal Support



## Services – Financial Management





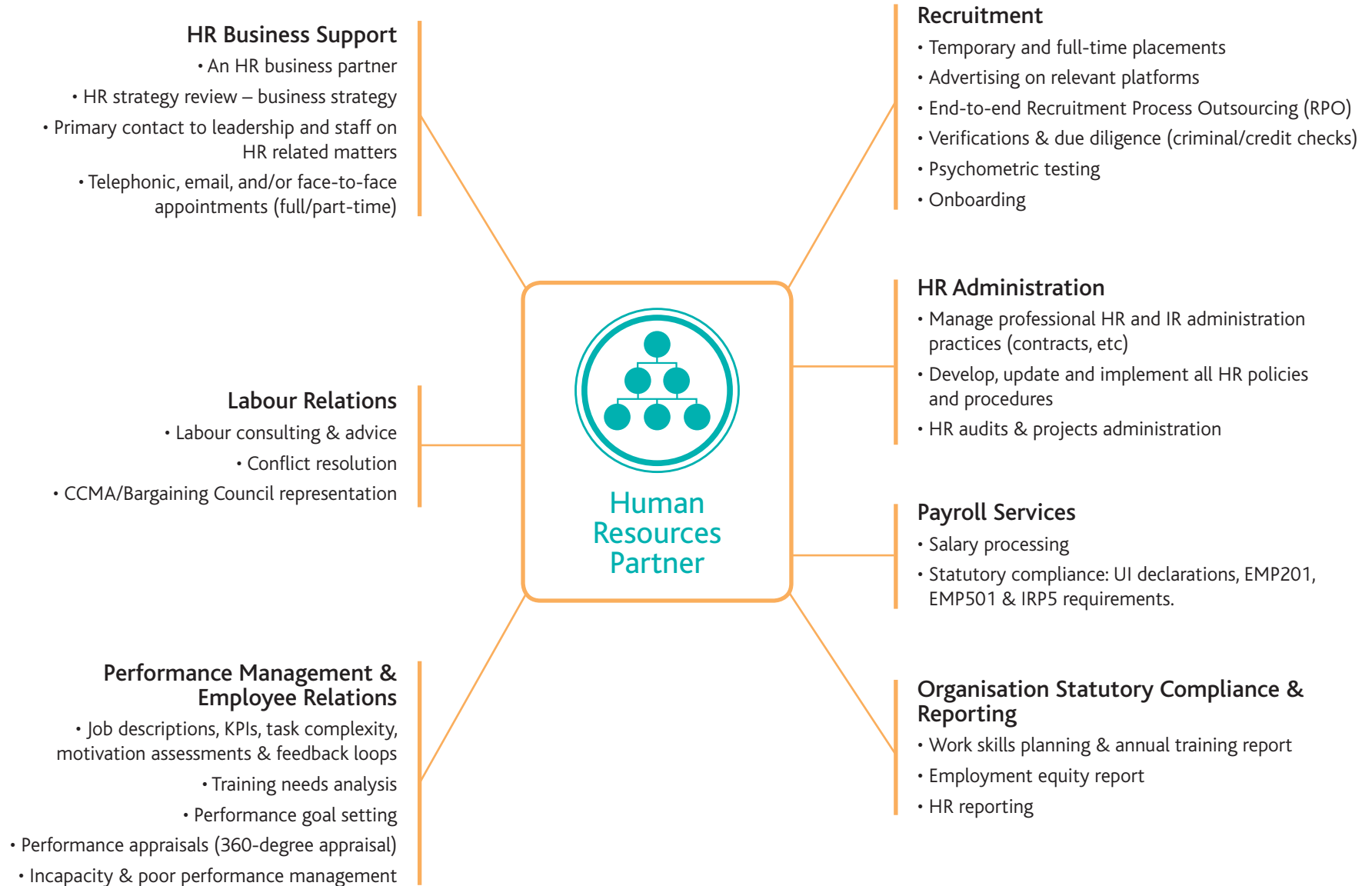
## Services – Compliance & Governance







## Services – Human Resources Partner





## Services – Legal Support





\$3 trillion of 'over-borrowing' risks new global crisis, warns IMF

Company	Price	Change
AS	1.331	▲
BT	1.308	▲
BT Group	1.308	▲
BT Group	1.308	▲
BT Group	1.308	▲

# Business

The Daily Telegraph  
Thursday 13 October 2011



## Services – Suggested Essential Services

Suggested Essential Services (Can be customised based on your current business needs)			
Start Up to Small Business	Small to Medium Business	Growth or Large Business	Non-Profit Entities
<p>Businesses who want professional financing record keeping and/or have been operating for less than 18 months.</p> <p><i>Emerging Micro Enterprises (EME) with business with an annual turnover of R10 million or less*</i></p>	<p>Businesses operating for more than 18 months and experiencing 'growing pains'.</p> <p><i>Small Enterprise (QSE) with an annual turnover of between R10 million and R50 million*</i></p>	<p>Growing businesses that require additional capacity and support.</p> <p><i>Generic (GENs) or large businesses with an annual turnover in excess of R50 million*</i></p>	<p>Organisations that are not set up primarily for the personal gain or profit of their members but rather to advance the public interest or some common interest of their members.</p>

\* Broad-Based Black Economic Empowerment act (BBBEE)

List of services (linked to detailed outline)	Suggested Essential Services (Can be customised based on your current business needs)			
FINANCIAL MANAGEMENT				
Budgeting	•	•		•
Bookkeeping	•	•		•
Accounting & Financial Reporting	•	•		•
Audit Oversight		•	•	•
Management Support		•	•	•
Customised Financial Process		•	•	•



## Services – Suggested Essential Services

Suggested Essential Services (Can be customised based on your current business needs)			
Start Up to Small Business	Small to Medium Business	Growth or Large Business	Non-Profit Entities
Businesses who want professional financing record keeping and/or have been operating for less than 18 months. <i>Emerging Micro Enterprises (EME) with business with an annual turnover of R10 million or less*</i>	Businesses operating for more than 18 months and experiencing 'growing pains'. <i>Small Enterprise (QSE) with an annual turnover of between R10 million and R50 million*</i>	Growing businesses that require additional capacity and support. <i>Generic (GENs) or large businesses with an annual turnover in excess of R50 million*</i>	Organisations that are not set up primarily for the personal gain or profit of their members but rather to advance the public interest or some common interest of their members.

\* Broad-Based Black Economic Empowerment act (BBBEE)

List of services (linked to detailed outline)	Suggested Essential Services (Can be customised based on your current business needs)			
COMPLIANCE & GOVERNANCE				
Policies and Procedures			•	
Board Reports			•	•
Board Compliance			•	
SARS Compliance	•	•	•	•
(CIPC) Company Secretarial Services	•	•	•	•
B-BBEE Affidavit Completion & Commissioning	•	•		

## Services – Suggested Essential Services

Suggested Essential Services (Can be customised based on your current business needs)			
Start Up to Small Business	Small to Medium Business	Growth or Large Business	Non-Profit Entities
Businesses who want professional financing record keeping and/or have been operating for less than 18 months. <i>Emerging Micro Enterprises (EME) with business with an annual turnover of R10 million or less*</i>	Businesses operating for more than 18 months and experiencing 'growing pains'. <i>Small Enterprise (QSE) with an annual turnover of between R10 million and R50 million*</i>	Growing businesses that require additional capacity and support. <i>Generic (GENs) or large businesses with an annual turnover in excess of R50 million*</i>	Organisations that are not set up primarily for the personal gain or profit of their members but rather to advance the public interest or some common interest of their members.

\* Broad-Based Black Economic Empowerment act (BBBEE)

List of services (linked to detailed outline)	Suggested Essential Services (Can be customised based on your current business needs)			
HUMAN RESOURCES PARTNER				
HR Business Support		●	●	●
Labour Relations	adhoc	adhoc	●	●
Performance Management & Employee Relations		●	●	●
Recruitment	adhoc	adhoc	●	●
HR Administration	●	●	●	●
Payroll Services		●	●	●
Organisation Statutory Compliance & Reporting	●	●	●	●

## Services – Suggested Essential Services

Suggested Essential Services (Can be customised based on your current business needs)			
Start Up to Small Business	Small to Medium Business	Growth or Large Business	Non-Profit Entities
<p>Businesses who want professional financing record keeping and/or have been operating for less than 18 months.</p> <p><i>Emerging Micro Enterprises (EME) with business with an annual turnover of R10 million or less*</i></p>	<p>Businesses operating for more than 18 months and experiencing 'growing pains'.</p> <p><i>Small Enterprise (QSE) with an annual turnover of between R10 million and R50 million*</i></p>	<p>Growing businesses that require additional capacity and support.</p> <p><i>Generic (GENs) or large businesses with an annual turnover in excess of R50 million*</i></p>	<p>Organisations that are not set up primarily for the personal gain or profit of their members but rather to advance the public interest or some common interest of their members.</p>

\* Broad-Based Black Economic Empowerment act (BBBEE)

List of services (linked to detailed outline)	Suggested Essential Services (Can be customised based on your current business needs)			
	<b>LEGAL SUPPORT</b>			
Contract Law	●	●	●	●
General Business Legal Support	●	●	●	●



## Contact Us



[sharon@intergr8ed.co.za](mailto:sharon@intergr8ed.co.za)



+27 82 534 8426



[www.intergr8ed.co.za](http://www.intergr8ed.co.za)

### Follow us on



[www.linkedin.com/in/sharon-lazarus-04a775133/](http://www.linkedin.com/in/sharon-lazarus-04a775133/)



[www.facebook.com/intergr8ed.solutions](http://www.facebook.com/intergr8ed.solutions)

